

A photograph of firefighters at night working on a brick building. The scene is illuminated by the warm orange light from the building's windows and the bright white light of a fire hose being used. A large red prohibition symbol (a circle with a diagonal line) is overlaid on the right side of the image, partially covering the word 'USEFUL'.

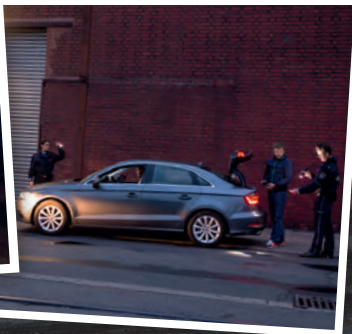
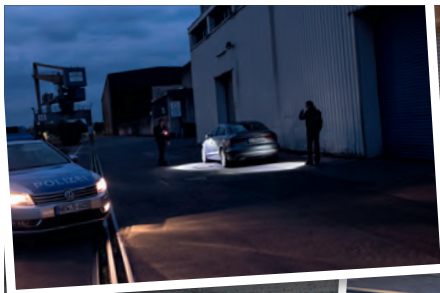
**EXTREMELY**

**USEFUL**

Headlamps and flashlights



 **LEDLENSER**



I AM  
**THE LIGHT**  
FOR ALL PURPOSES





**Ledlenser. The light. From page 4**

Quality, innovation and sustainability are important to us. Here, you will find out what else we represent.

**Technologies. From page 6**

Our lamps are full of passion and expertise. Between the pages 6 and 9, we will introduce you to some of our important technologies.

**Flashlights. From page 10**

Brighter, further, more efficient: these are the Ledlenser flashlights. Select from the X-, M-, T- and F-series – we have the right light for all your needs!

**Headlamps. From page 28**

Hands-free whenever you need it, with an Ledlenser headlamp you're always well equipped for the job. Discover the lighting professionals of the H-series!

**Accessories. From page 32**

Many serviceable additions for your lamp!

**Glossary. From page 38**

Knowledge is power, and we make high-end lamps with a kick. Read more here.

4 | Ledlenser. The light.

# THE UNBELIEVABLE

When you are out and about, the darkness is always your opponent. Flashlights from Ledlenser extend the daylight and, for some purposes, are even better than daylight. But you can bring light to the darkness!

Our flashlights provide unique orientation in the close-up range and create one thing, above all: Safety.

Ledlenser. The light.



# 7 YEAR WARRANTY\*

## Ledlenser. Quality. Engineered in Germany. Innovation. Sustainability.

For us the slogan "Engineered in Germany" is not just empty words, it represents the highest of demands in innovation, materials, technology, processing and sustainability.

Our environment is important to us. For this reason, we construct our flashlights using a modular system design. This means almost all parts can be replaced individually. In the event of a battery leak, for example, we simply replace the battery cartridge and not the entire unit. Easy on the environment and your budget.

All our products are equipped with the most modern of technologies. And we are constantly improving and developing further. Ledlenser

is not just any headlamp. Our claim is to provide the appropriate light for your individual needs, and we use the sun as our role model.

Ledlenser is known for straightforward service. We live and love our products and are convinced of their quality and performance. The satisfaction of our customers is very dear to our hearts. For this reason, we offer a **5 year warranty\*** on material and manufacturing faults for all original Ledlenser products!

**And, we go even further: Anyone who registers their product online, automatically receives a warranty of 7 years!**



**Engineered  
in Germany**



**Great  
customer  
satisfaction**



**Simple  
service**

# VERY PURPOSEFUL

Our patent. **The Advanced Focus System.**

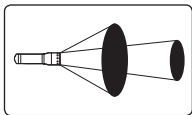
**Does more than just focus.** Even the specialists are astounded: Our patented focusing system, a combination of lense and reflector, enables light to be precisely adapted with unimaginable efficiency.



**CONCENTRATED.** *Focused*, you have a direct and powerful distance beam.



**WIDE.** *Defocused*, you have a circular floodlight that illuminates a large area.



Really useful light.  
**Speed Focus®.**

**FURTHER DEVELOPED.**

The one-handed sliding mechanism, Speed Focus®, is flexible, fast and reliable. And practical too. The light's focus can be changed in split seconds. And you only need one hand, leaving the other one free to hold other important things.

Unbeatable.  
**X-LENS Technology.**

**INCREASED.**

The X-LENS Technology multiplies the advantages of our Advanced Focus Systems (AFS). Perfectly synchronized bundled rays and an almost infinite number of reflector lenses combined in a single lamp. The result is power bundled light in a dimension that will take your breath away!

Progressive.  
**Floating Charge System.**

**INNOVATIVE.**

The wall mount and the magnetic contact make the charging process extremely convenient and the lamp can be removed with a single action even during charging.



# QUITE SURPRISING

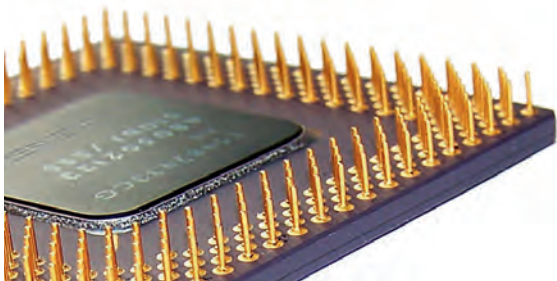
## Intelligent. **Smart Light Technology**

Do you light up things at a distance and concurrently use a map for orientation? In an emergency, do you send an SOS signal or dazzle an attacker with bright light? Do you send Morse messages? Do you dim the light in deployment or irritate a burglar using the stroboscope?

Micro-controllers make all this possible, in a simple way. They save light programs with different functions to make them easier to use.

Button and switch combinations are used to change to the required program. This ensures you have the right light at your fingertips for any situation.

The **Smart Light Technology** also monitors the charge state of the batteries and informs you, in good time, when the batteries need changing, thus ensuring you are never suddenly left out in the dark.





## Energy Modes. Functions.

The Energy Modes are micro-controller controlled "Basic settings" for your Ledlenser lamp:

**ECONOMIC.** Do you know that you will be out for a longer time but do not need the full performance? Simply switch into the operating-time-optimized **Energy Saving mode**.

**ONGOING.** Do you need constant light at full power? If so, the **Constant Current mode** is the ideal mode for you.

### Explanation in short. The light functions.



**BOOST** Briefly press the button to obtain more light for a short time.



**DIM** Infinite regulation of the lighting intensity between 15% and 100%.



**DEFENSE STROBE** Rapid flashes of light act as effective self-defense.



**POWER** High lighting performance for every situation.



**BLINK** Automatic transmission of light impulses at regular intervals.



**STROBE** Rapid light flashes with an irritating dazzling effect for use in an emergency.



**LOW POWER** For glare-free reading and working.



**POSITION** To mark a position.



**SOS** Flash an SOS in an emergency.



**EMERGENCY LIGHT** Extra long lighting duration.



**MORSE/TACTICAL TASK** Simple transmission of signals using the switch.





# I AM THE BUNDLED POWER





## Brightness. Further. More efficient. The Ledlenser X-series.

The Ledlenser X-series offers a sensational performance and many useful functions: You have the surprise on your side when you dazzle an attacker or use the stroboscope function to confuse burglars. You can even use the SOS function to draw attention to someone who needs urgent assistance. Even in the darkest of nights, you are well equipped and have everything under control.

The LEDs installed in the X21R.2 trigger up to 700 meters<sup>1</sup> of enormous distance vision with up to 3,200 lumen<sup>1</sup>, and all at the touch of a button. For good night vision, the seven reflector lenses bundle the beam of light to a perfect circle.

The robust X-series is based on sustainable technology, and it has already proven itself a reliable colleague for generations, even in the toughest of situations faced by rescue service personnel.

<sup>1</sup> Information on page 39.

## Ledlenser X21R.2

### Amazing rechargeable power!

Quick switching, simple and direct control of individual light functions thanks to the Fast Action Switch.

Wear-free and sustainable, thanks to the future-proof Safety Ytrion Cell battery technology.



Safety Ytrion Cell®



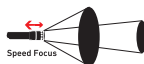
Focus Open 2014  
International Designpreis  
Baden-Württemberg



Extremely precise, seven reflector lenses bundle the powerful beam.

No accidental lighting thanks to the Lock function for transport security.

Speed Focus® for quick focusing and defocusing.





reddot award 2014  
winner

GT  
SICHERHEIT  
AWARD  
2015  
FINALIST

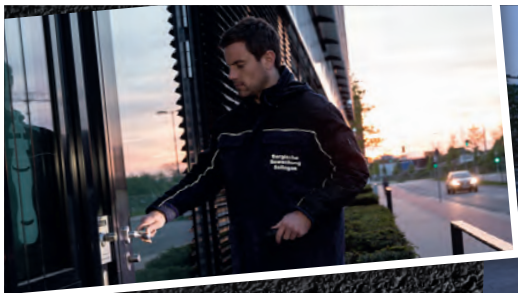


Convenient charging  
Floating Charge System  
with magnetic charging  
socket.



MODEL	X21R.2	X21.2
LED(s) Quantity/ Model	7 x Xtreme LED	7 x Xtreme LED
<b>Dimensions</b>		
Length (mm)	405	397
Weight (g)	1.300	1.400
Head diameter (mm)	95	95
<b>Technical data</b>		
Luminous flux (lm) <sup>1</sup> Boost/Power/Low Power	3200/2500/200	-/1600/250
Beam distance (m) <sup>1</sup> Boost/Power/Low Power	700/600/150	-/600/250
Lighting duration (h) <sup>2</sup> Boost/Power/Low Power	3/4/40	-/20/100
Energy tank (Wh) <sup>3</sup>	48	120
Voltage supply	Safety Ytrion Cell	4 x D
Rechargeable	•	
<b>Technologies</b>		
Smart Light Technology	•	•
Advanced Focus System	•	•
X-LENS Technology	•	•
Speed Focus®	•	•
Fast Action Switch	•	
Floating Charge System	Pro	

<sup>1, 2, 3</sup> Information on page 39.



I AM  
**HANDY** AND  
**INTELLIGENT**







## High tech. Revolutionary. Award winning. The Ledlenser M-series.

The Ledlenser M-series flashlights are robust, handy and hold considerable technology. In use, they are tough colleagues with great performance. The large range of functions enables flexible, and yet, precise use. The economy makes them durable. When you switch one on for the first time, it is clear that they are more than just serviceable. Many a professional has responded with a simple, surprised "Wow" and sparkling eyes.

The high performance M17R, for example, offers a beam distance of up to 450 meters<sup>1</sup> at 850 lumen<sup>1</sup>. It has eight light programs and an optimized energy consumption.

Surprising that so much high technology can be packed into a handy flashlight with a simple, clean design. Not surprising, on the other hand, that this revolutionary concept has also convince the judges and that the flashlights in the Ledlenser M-series have won several awards.

<sup>1</sup> Information on page 39.

## Ledlenser M17R

The performance giant with tomorrow's technology.

Quick switching, simple and direct control of individual light functions thanks to the Fast Action Switch.

A question of settings – Eight light functions: Boost/Power/Low Power/Morse/Dim/SOS/Blink/Strobe.



reddot award 2014  
winner



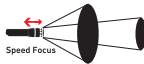
2014



Focus Open 2013  
Silver

Award-winning – Winner of the Red Dot Design Award, the IF Product Design Award and the Focus Open Silver.

Improved vision both close-up and at a distance thanks to infinite focusing with the Speed Focus®.



Three times more charging cycles than lithium ion rechargeable batteries, with the Safety Ytrion Cell.

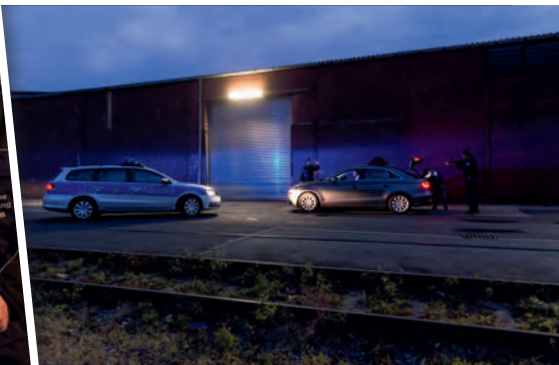
## Ledlenser M-Serie

### The reliable colleague.



MODEL	M17R	M14X	M7RX	M7R
LED(s) Quantity/ Model	1 x Xtreme LED	1 x Xtreme LED	1 x Xtreme LED	1 x High Power LED
<b>Dimensions</b>				
Length (mm)	302	162	156	153
Weight (g)	750	365	203	200
Head diameter (mm)	53	47	37	38
<b>Technical data</b>				
Luminous flux (lm) <sup>1</sup>	850	650	600	400
Beam distance (m) <sup>1</sup>	450	280	235	280
Lighting duration (h) <sup>2</sup>	36	15	8,5	40
Energy tank (Wh) <sup>3</sup>	25,6	16,8	8,1	8,1
Voltage supply	Safety Ytrion Cell	4 x AA	1 x Li-Ion 3,7 V	1 x Li-Ion 3,7 V
Rechargeable	•		•	•
<b>Technologies</b>				
Smart Light Technology	Pro	•	•	•
Advanced Focus System	•	•	•	•
Speed Focus®	•	•	•	•
Fast Action Switch	•			
Floating Charge System	Pro		•	•

1, 2, 3 Information on page 39.



# I AM PREDESTINED FOR EXTREMES





## Unique. Perfected. Specialized. The Ledlenser T-series.

This series is globally unique: All models in the Ledlenser T-series are extremely high performing, handy, compact, and robust, thanks to the specialist technology, ideal for tactical use. Police forces and security officers value a bright, almost perfectly focused lamp for their tough everyday needs. A lamp that helps to prevent escalations, but which can also be used as a "light" weapon in extreme situations. Hooligans and burglars can be dazzled, surprised and confused, and put out of action for just a few decisive seconds.

The new models in the Ledlenser T-series are equipped with the latest and considerably more powerful LED chips, which emit a highly efficient luminous flux. The reflector lenses have been recalculated and, in conjunction with the Advanced Focus System, they provide even more homogeneous lighting throughout the entire focused area.



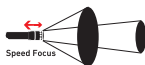
## Ledlenser T7M

### The partners for special uses.

Speed Focus® for quick focusing and defocusing for better vision both near and far.



Strong lighting performance – Up to a beam distance of 280 meters<sup>1</sup> with up to 400 lumen<sup>1</sup>.



<sup>1</sup> Information on page 39.

Unbreakable – Robust, easy-grip housing made from scratch-resistant, hard-anodized aviation aluminum.

Emergency hammer function – Tactical metal end cap.

Practical and useful – Standing end cap.

LED LENSER® T7M  
18 18000000



reddot award 2014  
winner

Award-winning – Winner of the Red Dot Design Award.

Non-slip – Lock functions securely fixes a focus position in place.

You will always know on time when your power is running out – The low battery warning system.

## Ledlenser T-series.

The companion for tactical uses.



MODEL	T16	T14	T7M
<b>LED(s) Quantity/ Model</b>	1 x Xtreme LED	1 x Xtreme LED	1 x High Power LED
<b>Dimensions</b>			
<b>Length (mm)</b>	181	126	131
<b>Weight (g)</b>	527	341	180
<b>Head diameter (mm)</b>	47	47	37
<b>Technical data</b>			
<b>Luminous flux (lm)<sup>1</sup></b>			
White light T <sup>2</sup> QC	1000/300/20	700/300/20	400/300/40
Boost/Power/Low Power			
<b>Beam distance (m)<sup>1</sup></b>			
White light T <sup>2</sup> QC	320/150/50	250/150/50	280/240/100
Boost/Power/Low Power			
<b>Lighting duration (h)<sup>2</sup></b>			
White light T <sup>2</sup> QC	5/15/180	3/6/80	2/5/35
Boost/Power/Low Power			
<b>Energy tank (Wh)<sup>3</sup></b>	16,8	16,8	7,2
<b>Voltage supply</b>	8 x AAA	4 x AA	4 x AAA
<b>Technologies</b>			
<b>Smart Light Technology</b>	•	•	•
<b>Advanced Focus System</b>	•	•	•
<b>Speed Focus®</b>	•	•	•
<b>Turning Focus</b>			
<b>Dynamic Switch</b>			
<b>Fast Lock System</b>	•	•	•
<b>Energy Management System</b>	•	•	•

<sup>1, 2, 3</sup> Information on page 39.

**T7.2****T5.2****TT****T²****T²QC**1 x  
High Power LED1 x  
Power LED1 x  
High Power LED1 x  
Power LED1 x  
Power LED

130

113

116

115

97

175

80

132

98

106

37

26

32

25,2

30,5

320/250/40

-/140/-

-/280/25

-/240/25

-/140/-

260/220/100

-/120/-

-/220/80

-/180/60

-/25/-

2/4/50

-/5/-

-/4/30

-/4/30

-/4/-

7,2

4,2

5,4

5,4

5,4

4 x  
AAA1 x  
AA3 x  
AAA  
1,5 V3 x  
AAA  
1,5 V3 x  
AAA  
1,5 V

•

•

•

•

•

•

•

•

•

•

•



I AM A SMALL  
**MILITARY**  
POWERHOUSE







## Light. Small. Wow. The Ledlenser F-series.

This isn't just us being coy, when you first pick up one of the F-series lamps from Ledlenser, the only thing that crosses your mind is "Wow". The surface is anodized according to the HA III military standard, lies well in the hand and feels great – almost perfect in fact. Attempts in testing to, for example, scratch the housing with a knife, did not work: The Ledlenser F-series is made for extreme uses!

At first glance, the small, very lightweight flashlight doesn't give away much about the amazing power concealed within. But it is indeed a real lighting powerhouse. In Boost\* mode, the rechargeable Ledlenser F1R provides up to 1,000 lumen<sup>1</sup> of luminous flux with a beam distance of up to 160 meters<sup>1</sup>. A fantastic achievement for a flashlight that is just 115 mm in length with a weight of 120 g!

<sup>1</sup> Information on page 39.

\* Can be switched briefly for 30 seconds.

## Ledlenser F1R

The rechargeable performance giant with small dimensions.

Lightweight product with much technology concealed within, including electronic regulation with temperature sensor.

A masterpiece in pocket format – integrated roll-protection, replaceable tactical ring, water-tight in accordance with IPX8.

Extremely bright thanks to the Xtreme Power LED.

Enormous power in a small package – State-of-the-art lighting performance of up to 1,000 lumen<sup>1</sup> with just a small 18650 lithium-ion battery pack or CR123A!

Almost indestructible and extremely durable – HA III anodization according to military standards.



## Ledlenser F-series

### Small, but something else!

Environmentally friendly and flexible, operates on battery pack or batteries.

Practical and useful – Standing end cap.

Simply click using the end cap switch to select the desired function.



MODEL	F1R	F1 WHITE	F1
<b>LED(s) Quantity/ Model</b>	1 x Xtreme LED	1 x Xtreme LED	1 x High Power LED
<b>Dimensions</b>			
<b>Length (mm)</b>	115	88	88
<b>Weight (g)</b>	120	69	69
<b>Head diameter (mm)</b>	30	27	27
<b>Technical data</b>			
<b>Luminous flux (lm)<sup>1</sup> Boost/Power/Low Power</b>	1000/250/10	-/500/60	-/400/60
<b>Beam distance (m)<sup>1</sup> Boost/Power/Low Power</b>	160/80/20	-/100/60	-/100/60
<b>Lighting duration (h)<sup>2</sup> Boost/Power/Low Power</b>	3/6/60	-/2/3.5	-/2/3.5
<b>Energy tank (Wh)<sup>3</sup></b>	8.1	3.9	3.9
<b>Voltage supply</b>	1x lithium ion 3.7V	1x CR123A	1x CR123A
<b>Rechargeable</b>	•		
<b>Charging time (h)</b>	7		
<b>Technologies</b>			
<b>Smart Light Technology</b>	•	•	•
<b>Water protection class</b>	IPX8	IPX8	IPX8

<sup>1, 2, 3</sup> Information on page 39.



**I AM THE  
LEADING  
HELPER**





**Strong performance. Strong functions.  
Strong tool.**

### **The Ledlenser H-series.**

At night when fighting fires, you need both hands free, for example, clearing up after a fire. In addition, when rescuing injured parties, it makes sense to wear a headlamp in the dark. The lamps in the Ledlenser H-series ensure, thanks to their ergonomic design, the best possible wearing comfort. Moreover, their extremely bright LEDs ensure the best vision, just when every minute counts.

Up to 300 meters<sup>1</sup> beam distance with up to 850 lumen<sup>1</sup> and a lighting duration of up to 40 hours<sup>2</sup> characterize the H14R.2, the flagship in this series. The transport lock and infinite focus function complete this powerful headlamp.

The lamps in the Ledlenser H-series are flexible and robust aids – and you can rely on them 100 % in any situation!

<sup>1, 2</sup> Information on page 39.

## Ledlenser H14R.2

With rechargeable battery packs or batteries –  
Perfect for hunting and fishing.

Environmentally friendly  
thanks to rechargeable  
battery pack.

Modern universal bracket  
offers versatile usage and  
mounting options.

For individuals –  
3 light programs  
and 5 functions,  
for all your needs.

Xtreme LED –  
extremely bright,  
brilliant light  
cone.

Intelligent software designed to  
optimize energy consumption.

Infinite focus function  
improves vision both  
near and far.



reddot award 2014  
winner



## Ledlenser H-series

Robust high-performance technology with pleasant wear comfort.



MODEL	H14R.2	H14.2	H7R.2	H7.2
LED(s) Quantity/ Model	1 x Xtreme LED	1 x High Power LED	1 x High Power LED	1 x High Power LED
<b>Dimensions</b>				
Weight (g)	340	340	165	165
Head diameter (mm)	37	37	34.9	34.9
<b>Technical data</b>				
Luminous flux (lm) <sup>1</sup> Boost/Power/Low Power	850/350/60	350/250/60	300/200/20	250/200/20
Beam distance (m) <sup>1</sup> Boost/Power/Low Power	300/200/70	260/230/100	160/140/50	160/140/50
Lighting duration (h) <sup>2</sup> Boost/Power/Low Power	6/10/40	8/15/60	6/14/60	7/12/60
Energy tank (Wh) <sup>3</sup>	16.3	16.8	5.2	7.2
Voltage supply	1 x lithium-ion battery pack	4 x AA	1 x lithium-ion 3.7V	4 x AAA
Rechargeable	•		•	
<b>Technologies</b>				
Smart Light Technology	•	•	•	•
Advanced Focus System	•	•	•	•
Turning Focus			•	•
Speed Focus®	•	•		
Energy Management System	•	•	•	

<sup>1, 2, 3</sup> Information on page 39.



# QUITE ABUNDANT

Accessory highlights. **For the H-series.**



**MORE FILTERS.** With the **Color Filter Set** and the four colored filters, the H14R.2 and H14.2 can also light in color (also available for flashlights).  
Item number: 0313-F



**MORE FREEDOM OF MOVEMENT.** The **Extension Cable** for H14R.2 and H14.2 allow you to pack the battery box in your rucksack.  
Item number: 0396



**MORE OPTIONS.** When you need to keep your head free, the headlamps of type H14.2 and H14R.2 can be secured on rods of any kind, using the **Universal Mounting Bracket** (fixed mount).  
Item number: 0363



**MORE FLEXIBILITY.** The **USB Car Charger Adapter** fits into every cigarette lighter so units can also be charged on the way.  
Item number: 0380

## Accessory highlights. For flashlights.



**MORE FREEDOM FOR THE HANDS.** The lamp can be clipped to the belt and converted into a spotlight using the **Intelligent Clip** with 360° rotation. Your hands are free for use elsewhere. Various item numbers



**MORE HOLD.** The flashlight also adheres to magnetic surfaces when combining the **magnetic holder** with the **Intelligent Clip**. Item number: 0314



**MORE HOLD.** Lamps with a diameter of 25-34 mm safely attach to, for example, branches or tent poles with the robust **Universal Mounting Bracket (flexible)**. Item number: 0362



**MORE COLOR.** Simply insert the relevant filter disc into the rubber ring and fasten the **Intelligent Filter Holder** to the pants using the **Intelligent Clip**. Item number: 0039



**MORE PREPARED.** For extreme uses, the **Tactical Professional Holster** can be adapted flexibly to the belt, coupling, to a MOLLE system or a rucksack. Various item numbers.



**MULTI ATTACHMENT.** Lamps with a shaft diameter of around 38 mm can be mounted to a tripod with the **Tripod Fastener**. The mount has a 1/4 inch, 20 UNC thread. For X21.2, X21R.2, M17R. Item number: 0311



## Accessories for flashlights. Overview.



MODELL	X21R.2	X21.2	M17R	M14X	M7RX	M7R	T16
Roll Protection	0312	0312			0313	0313	
Tripod Fastener	•	•	•				
USB Car Charger	•		•				
Intelligent Clip			0319	0319	0317	0317	0319
Magnetic Mounting				•	•	•	
Signal Cone			0042	7478	0040	0040	7478
Safety Bag				0341	0342	0342	
Roll Resistance Ring					0320	0320	0321
Intelligent Filter Holster					•	•	
Tactical Professional Holster					0323	0323	
Universal Mounting Bracket					7799-PT	7799-PT	
Universal Mounting System					•	•	
Remote Switch							
Color Filter Set					•	•	
Signal Cone (White)					•	•	

NEW



T14	T7M	T7.2	T5.2	TT	T <sup>2</sup> QC	T <sup>2</sup>	F1R	F1 / W	ITEM NO.
	0313	0313	0313						See product
									0311
							•		0386
0319	0317	0317	0315			0316			See product
	•	•				•			0314
7478	0040	0040		0041		7479			See product
	0333	0333	0336	0338		0337	0337		See product
0321	0320	0320							See product
	•	•							0039
	0323	0323				0322			See product
	7799-PT	7799-PT	7799-PT5		7799-PT	7799-PT	7799-PT	7799-PT	See product
	•	•	•		•	•	•	•	0362
		•							0360
	•	•							0313-F
	•	•							0040-W

## Accessories for H-series. Overview.



MODEL	H14R.2	H14.2	H7R.2	ITEM NUMBER
USB Car Charger Adapter	•		•	0380
Helmet Mount	•	•		0393
Color Filter Set	•	•		0313-F
Universal Mounting Bracket	•	•		0363
USB Charger	•		•	0389
Rechargeable Battery Pack (lithium ion)	7790		7789	See product
Extension Cable	•	•		0396



## Glossary. Terms, explained briefly.

### **ADVANCED FOCUS SYSTEM**

A special patented (EP 1880 139 B1) "focusing system" from Ledlenser which combines the benefits of lenses and reflectors. An essential component of our reflector lens that it is capable of bundling twice as much light into the focus as traditional reflectors. This enables an unbelievable long-distance beam. At the same time, the reflector lens is also able to produce a circular, homogeneous light that is ideal for reading or for lighting close up.

### **DYNAMIC SWITCH**

During use, it is sometimes necessary to suddenly switch to bright light and then regulate the brightness back just as quickly. Our new Dynamic Switch simultaneously makes both possible. With one hand. In a split second.

### **ENERGY TANK**

This shows the overall performance of all batteries in the unit. For example: 4 x AA x 2800 mAh x 1.5 Volt = 16.8 Watt hours (Wh).

### **FLOATING CHARGE SYSTEM**

The wall mount and the magnetic contact make the charging process extremely convenient and the lamp can be removed with a single action even during charging.

### **FOCUSED**

In the focus setting, the reflector bundles the light forwards. In addition, the diffused light emitted by conventional

reflectors is bundled by the lens. The advantage: up to twice as much light in focus than with traditional reflectors.

### **DEFOCUSED**

By this, we mean a circular beam of light, suitable primarily for reading and for close up. A circular and homogeneous light can be created with a diode in front of the lens.

### **HOMOGENEOUS LIGHT**

Homogeneous light is evenly reflected light. The Advanced Focus System guarantees glare-free and homogeneous light. Traditional reflectors, insofar as these can be focused, throw concentric circles in a defocused state and project a black hole in the middle. This makes precision work more difficult.

### **LED**

An LED (Light Emitting Diode) is an electronic light source. They are based on so-called semi-conductors such as gallium, silicon or arsenic. In order to be able to emit highly efficient light, they must be extremely pure and fulfill certain requirements. They are not sensitive to impact. And last 1,000 times longer than a traditional light bulb while generating very little heat and consuming little power. LEDs do not contain any hazardous gases nor do they generate UV radiation.

### **LUMEN**

Lumen is the unit of measurement used to measure real reflected light quantities (luminous flux).

Unlike other manufacturers, we measure the lumen that is radiated from our reflectors (with fresh batteries), thus without any losses incurred in the reflector/lamp head.

### **MODULAR SYSTEM**

Ledlenser lamps have a modular construction. This means that individual components may be replaced if required. The modular construction also makes cleaning the devices easier, particularly, after extreme use.

### **OPTISENSE® TECHNOLOGY**

Sometimes it's dusky or shadowy, sometimes murky and sometimes pitch black. It is good to know that you can always trust in the innovative dimmer function of your Ledlenser lamp. Because this function automatically regulates luminance depending on the reflecting light and thus prevents dazzling effects.

### **REFLECTOR LENSE**

We have combined the benefits of lenses with the benefits of reflector technology. The result is both a homogeneous circular beam of light close up and an extremely strong light for long-distance use.

### **SMART LIGHT TECHNOLOGY**

To ensure that headlamps are ideally optimized to your individual needs, the Smart Light Technology creates very personalized lighting tools. This is made possible by the microcontrollers that save light programs with a variety of functional scopes in conjunction with button and switch combinations.

## Footnotes.

### **SPEED FOCUS®**

Within milliseconds, the close circular light can be switched to strongly focused distance light. Thanks to the special sliding mechanism of the Speed Focus® this function can be operated with just one hand. It couldn't be easier to switch the light mode quickly, simply and reliably.

### **TURNING FOCUS**

The Ledlenser lamps have everything in view, thanks to the Turning Focus. The focus can be infinitely adjusted. Ideal, the handy rotating head makes it easy to convert close-up light into a sharply focused long-distance beam.

### **X-LENS TECHNOLOGY**

The X-LENS technology multiplies the advantages of our Advanced Focus Systems (AFS) and lifts the results into a new, light qualitative dimension. But above all, we optimize our lenses with the help of intricate computer calculations in order to create a compound of perfectly synchronized bundled rays. The precision and brightness of not one, but an almost infinite number of reflector lenses contributes towards ensuring a practically unbelievable lighting experience. The result, namely a high-quality homogeneous, stage-like flood lights as well as the most focused long-distance beam, is almost as surprising as it is elegant.

<sup>1</sup> Luminous flux (lumen/lm) or maximum beam distance (in meters) is measured using the setting specified in the table or text when switching on with a set of fresh alkaline batteries or, for rechargeable units, with a fully charged battery pack. If no brightness level is specifically named, the values refer to the Boost function, or if there is no Boost, to the respective brightest setting available. These are average values that may deviate by +/- 15 % in individual instances in accordance with chip and battery/battery pack. A Boost function is available multiple times, but only for a very brief period of time in each case.

<sup>2</sup> The average lighting duration (h) of the relevant setting as given in the table or in the text is up to a luminous flux of 1 lumen. If no brightness level is specifically named, the values refer to the Low Power function, or if there is no such function, to the respective lowest setting available. A Boost function

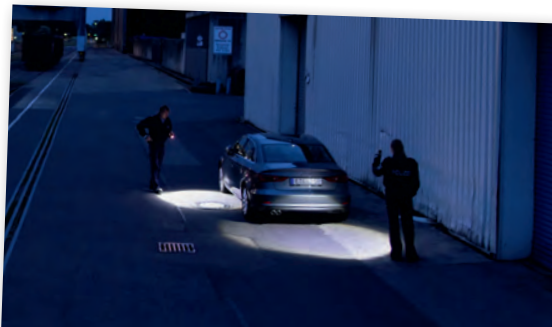
(if included) is available multiple times, but only for a very brief period of time.

<sup>3</sup> Calculated value of the capacity in Watt hours (Wh). This applies to the battery(ies) contained in the relevant product in the delivered state or, for flashlights with battery pack(s), when the batteries are in a fully charged state.

### **NOTE**

The data on scope of delivery, performances, dimensions, weights correspond to the existing knowledge at the time of printing. We reserve changes in scope of supply, appearance, design and color within the scope of further development without prior notice.

Product illustrations can deviate from the actual appearance of the products and may show optional accessories that can be purchased against extra charge.







 LEDLENSER