



SUPER

DEPENDABLE

Headlamps and flashlights



LED LENSER® 



I AM
THE LIGHT
FOR YOUR DAILY LIFE





LED LENSER®. The light. From page 4

Quality, innovation and sustainability are important to us. Here, you will find out what we represent.

Technologies. From page 6

Our lamps are full of passion and expertise. Between the pages 6 and 7, we will introduce you to some of the technologies we use.

P-series. From page 8

Brighter, further, more efficient: these are the LED LENSER® flashlights. Make your choice from the practical P-series – we have the perfect light for your daily life!

H-series. From page 14

Hands free where you need it: you are equipped for every eventuality with a LED LENSER® headlamp. Discover the H-series lighting professionals!

Accessories. From page 18

Lots of practical additions for your lamp!

Glossary. From page 22

Knowledge is power, and we make high-end lamps with a kick. Read more here.

4 | LED LENSER®. The light.

A nighttime photograph of a cityscape. On the left, a church with a tall, dark spire is illuminated from below. In the center, a large construction crane stands with its lights on. To the right, a building with a clock tower is lit up. The scene is reflected in a body of water in the foreground. The sky is dark blue.

THE UNBELIEVABLE

The day is far from being over when the sun goes down. Lamps from LED LENSER® help to extend the daylight and reliably light up the dimmest of corners. No basement is too dusty, no path for walking the dog too unlit and no power outage too dark. A LED LENSER® lamp belongs to the everyday things that no household should go without.

Our lamps provide unique orientation in the close-up range and are, above all, very dependable.

LED LENSER®. The light.



LED LENSER®. Quality. Engineered in Germany. Innovation. Sustainability.

For us the slogan "Engineered in Germany" is not just empty words, they represent the highest of demands in innovation, materials, technology, processing and sustainability.

Our environment is important to us. For this reason, we construct our lamps using a modular system design. This means almost all parts can be replaced individually. In the event of a battery leak it is possible, for example, to simply replace the battery cartridge and not the entire lamp. Easy on the environment and budget.

All our lamps are equipped with the most modern of technologies.

And we are constantly improving and further developing them. LED LENSER® are not just lamps. Our claim is the appropriate light for your individual requirements, and we use the sun as our role model.

Customer satisfaction is key. Our Service department can be reached at **+49 (0)212 5948-111** and will help you directly and simply – in the event something no longer functions the way it should.

You will also contact us on Facebook **www.facebook.com/LedLenser**, visit our website **[ledlenser.com](http://www.ledlenser.com)** or the forum **www.ledlenser.com/forum**.



**Engineered
in Germany**



**Great
customer
satisfaction**



**Simple
Service**



VERY PURPOSEFUL

Our patent. **The Advanced Focus System.**

Does more than just focus. Even the specialists are astounded: Our patented focusing system, a combination of lense and reflector, enables light to be precisely adapted with unimaginable efficiency.



CONCENTRATED. *Focused,* you have a direct and powerful distance beam.



WIDE. *Defocused,* you have a circular floodlight that illuminates a large area.



Really useful light.
Speed Focus®.

FURTHER DEVELOPED.

The one-handed sliding mechanism, Speed Focus®, is flexible, fast and reliable. And practical too. The light's focus can be changed in split seconds. And you only need one hand, leaving the other one free to hold other important things.

All-round handy.
Turning Focus.

ROTATABLE.

Just a turn and the lamps have everything in view, thanks to the Turning Focus. The focus can be infinitely adjusted. Ideal, the handy rotating head makes it easy to convert a close-up light into a sharply focused long-distance beam.

Progressive.
Floating Charge System.

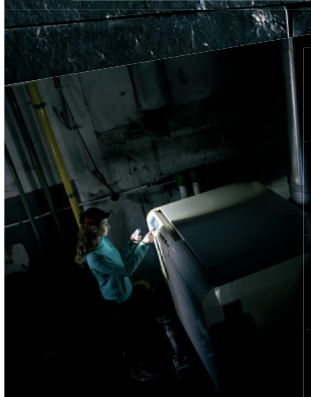
INNOVATIVE.

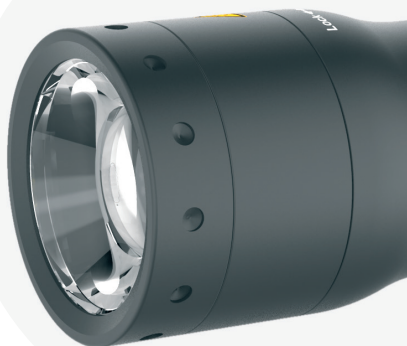
The wall-mount and magnetic contact make the charging process extremely convenient and the lamp can be picked up for use with a single grip even when charging.





I DELIVER
TOP
PERFORMANCE





The high-performance line. The LED LENSER® P-series.

In a nutshell, P-series flashlights offer a lot of performance at an affordable price. They are long lasting, robust and easy to handle. This makes them ideal, indispensable helpers in the household, for example, in case of power outage, in renovation projects, tidying up and rearranging things, walking the dog and ongoing repair work.

The P7 is the most-frequently purchased model from the LED LENSER® flashlight product range worldwide. This legendary flashlight will be available as a rechargeable version soon*: the LED LENSER® P7R*. This practical and sustainable all-rounder will convince with indestructible technology along with extreme durability, and it'll save you money but also benefit the environment.

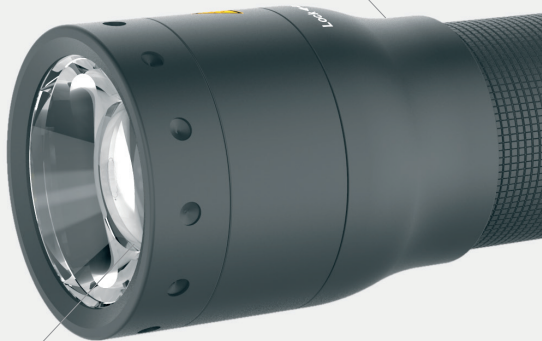
Do you have any experience in daily use and suggestions for improving our flashlights? Please let us know; we are grateful and open for your requests!

* The new LED LENSER® P7R is available from the 4th quarter 2015 onwards.

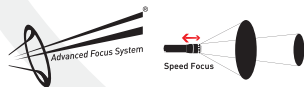
LED LENSER® P7R*

Practical all-rounder with indestructible technology and rechargeable.

Speed Focus® for quick focusing and defocusing for better vision both near and far.



Brilliant, extremely bright light cone thanks to High End Power LED.



* The new LED LENSER® P7R is available from the 4th quarter 2015 onwards.

The legendary
LED LENSER® P7
as a rechargeable
version soon: the **new**
LED LENSER® P7R
is available from the
4th quarter 2015
onwards!

Practical and ready to hand –
comfortable magnetic charging
with the Floating Charge System.



Protects the environment
and is easy on the wallet –
rechargeable.

The LED LENSER® P-series.



MODEL	P17R	P17.2	P14.2	P7.2	P6.2
LED(s) Quantity/ Model	1 x Xtreme Power LED	1 x High End Power LED	1 x High End Power LED	1 x High End Power LED	1 x High End Power LED
Dimensions					
Length (mm)	300	306	197	130	163
Weight (g)	740	775	350	175	115
Head diameter (mm)	53	53	47	37	26
Technical data					
Luminous flux (lm) ¹ Boost/Power/Low Power	-/400/-	450/350/50	350/250/50	-/320/40	-/200/-
Beam distance (m) ¹ Boost/Power/Low Power	-/420/-	420/280/140	270/230/100	-/260/100	-/120/-
Lighting duration (h) ² Boost/Power/Low Power	-/10/-	30/50/300	3/5/40	-/2/50	-/25/-
Energy tank (Wh) ³	25.6	90	16.8	7.2	8.4
Voltage supply	1 x Safety Ytrion Cell	3 x D	4 x AA	4 x AAA	2 x AA
Rechargeable	•				
Technologies					
Smart Light Technology	•				
Advanced Focus System	•	•	•	•	•
Speed Focus®	•	•	•	•	•
Turning Focus					
Dynamic Switch		•	•	•	
Floating Charge System	Pro				

^{1, 2, 3} Information on page 23.

The high performer flashlights.

**P5R.2****P5.2****P4****P3 AFS P****P3****P2**

1 x High End Power LED	1 x High End Power LED	1 x High End LED	1 x High End Power LED	1 x High End LED	1 x High End LED
------------------------------	------------------------------	---------------------	------------------------------	---------------------	---------------------

117

113

147

90

96

103

75

80

53

35

35

36

26

26

14,5

18,5

18,5

15,5

-/270/20

-/140/-

-/18/-

-/75/-

-/16/-

-/16/-

-/240/50

-/120/-

-/25/-

-/120/-

-/31/-

-/25/-

-/4/12

-/5/-

-/8,5/-

-/1,1/-

-/7/-

-/7/-

2,6

4,2

3,6

1,8

1,8

1,8

1 x
Li-Ion1 x
AA2 x
AAA1 x
AAA1 x
AAA1 x
AAA

•

•

•

•

•

•

•

•

•

•

•



I AM YOUR
**LEADING
HELPER**





Strong performance. Strong functions. Strong headlamps.

The LED LENSER® H-series.

There are situations in everyday life in which you will need both hands. For example, when you walk the dog in the evening around the block or you need to give the plumber important information about the defective device type in the dark basement.

Conventional headlamps on the head are often bothersome, uncomfortable and feel heavy. Not so our headlamps from the LED LENSER® H-series. Their ergonomic design provides the best possible wear comfort, and their extremely bright LEDs provides the best vision, for example, when changing the tyre or during car substructure check-up.

Our H-series headlamps are your true everyday life aids with the quality and workmanship you expect from LED LENSER®. We place special emphasis on the durability of our products, and should anything ever be defective, we are happy to help you quickly and in an uncomplicated manner. These are not empty words but a pledge.



LED LENSER® H7R.2

The rechargeable ergonomic wonder for widely interested bright minds.

Pleasant wear comfort thanks to balanced weight ratio.

Easy to operate: change into the individual lighting functions by repeatedly pushing the button.

Environmentally friendly thanks to rechargeable battery pack.

Simple lighting strength control – rotary switch on the rear side.

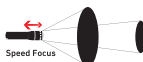
Wider illumination thanks to recalculated lense.

Rotating head for pinpoint light where you need it.

Infinite focus function improves vision both near and far.



reddot award 2014
winner



LED LENSER® H-series

Robust high-performance technology with pleasant wear comfort.



MODEL	H7R.2	H7.2	H6	H3
LED(s) Quantity/ Model	1 x Xtreme Power LED	1 x High End Power LED	1 x High End Power LED	3 x High End LED
Dimensions				
Head diameter (mm)	34.9	34.9	28	28
Weight (g)	165	165	132	114
Technical data				
Luminous flux (lm) ¹ Boost/Power/Low Power	300/200/20	250/200/20	-/200/5	-/60/-
Beam distance (m) ¹ Boost/Power/Low Power	160/140/50	160/140/50	-/120/20	-/31/-
Lighting duration (h) ² Boost/Power/Low Power	6/14/60	7/12/60	-/4/60	-/62/-
Energy tank (Wh) ³	5.2	7.2	5.4	5.4
Voltage supply	1 x Li-Ion 3,7 V	4 x AAA	3 x AAA	3 x AAA
Rechargeable	•			
Technologies				
Smart Light Technology	•	•		
Advanced Focus System	•	•	•	
Turning Focus	•	•	•	

^{1, 2, 3} Information on page 23.

QUITE ABUNDANT

Accessories highlights. For the P-series.



MORE FREEDOM FOR THE HANDS. The lamp is mounted using the **Intelligent Clip** which can be rotated by 360° and converts it to a practical belt-mounted spotlight.
Various item numbers
RRP: from € 8.90



MORE HOLD. The flashlight also adheres to magnetic surfaces when combining the **Magnetic Mounting** with the Intelligent Clip.
Item No.: 0314
RRP: € 9.90



MORE HOLD. Flashlights with a diameter of 25 - 34 mm safely adhere to rods with the robust **Universal Mounting Bracket**.
Item No.: 0362
RRP: € 14.90



MORE COLOUR. Simply insert the relevant filter disc into the rubber ring and fasten the **Intelligent Filter Holster** to the pants using the Intelligent Clip.
Item No.: 0039
RRP: € 24.90





Accessories highlights. For the H7R.2.



MORE CHARGE PROCESSES.

Using the **USB Charger**, the H7R.2 can be charged via the outlet, and with the charging cable it connects to every USB port, for example, to a computer.

Item No.: 0389

RRP: € 14.90



MORE FLEXIBILITY.

The **USB Car Charger** adapter fits into every cigarette lighter so lamps can also be charged on the way.

Item No.: 0380

RRP: € 9.90



Accessories. Overview.



MODEL	P17R	P17.2	P14.2	P7.2
Roll Protection				•
Signal Cone	0042	0042	7478	0040
Signal Cone, white				•
Tripod Fastener	•	•		
USB Car Charger				
USB Charger				
Intelligent Clip	0319	0319	0318	0317
Magnetic Mounting	•	•	•	•
Safety Bag			0334	0333
Roll Resistance Ring				•
Intelligent Filter Holster				•
Filter Set				•
Tactical Filter Holster				•
Universal Mounting Bracket				7799-PT
Universal Mounting System				•
Remote Switch				•



P6.2	P5R.2	P5.2	H7R.2	ITEM NO.
				0313
				See product
				0040-W
				0311
	•		•	0380
			•	0389
0315	0315	0315		See product
•	•	•		0314
0335	0337	0337		See product
				0320
				0039
				0313-F
				0323
7799-PT5	7799-PT5	7799-PT5		See product
•	•	•		0362
				0361

Glossary. Terms, explained briefly.

ADVANCED FOCUS SYSTEM

A special patented (EP 1880 139 B1) "focusing system" from LED LENSER® which combines the benefits of lenses and reflectors. An essential component of our reflector lens that it is capable of bundling twice as much light into the focus as traditional reflectors. This enables an unbelievable long-distance beam. At the same time, the reflector lens is also able to produce a circular, homogeneous light that is ideal for reading or for lighting close up.

DYNAMIC SWITCH

During use, it is sometimes necessary to suddenly switch to bright light and then regulate the brightness back just as quickly. Our new Dynamic Switch simultaneously makes both possible. With one hand. In a split second.

ENERGY TANK

This shows the overall performance of all batteries in the unit. For example: 4 x AA x 2800 mAh x 1.5 Volt = 16.8 Watt hours (Wh).

FLOATING CHARGE SYSTEM

The wall mount and the magnetic contact make the charging process extremely convenient and the lamp can be removed with a single action even during charging.

FOCUSED

In the focus setting, the reflector bundles the light forwards. In addition, the diffused light emitted by conventional reflectors is bundled by the lens. The advantage: up to twice as much light in focus than with traditional reflectors.

DEFOCUSED

By this, we mean a circular beam of light, suitable primarily for reading and for close up. A circular and homogeneous light can be created with a diode in front of the lens.

HOMOGENEOUS LIGHT

Homogeneous light is evenly reflected light. The Advanced Focus System guarantees glare-free and homogeneous light. Traditional reflectors, insofar as these can be focused, throw concentric circles in a defocused state and project a black hole in the middle. This makes precision work more difficult.

LED

An LED (Light Emitting Diode) is an electronic light source. They are based on so-called semi-conductors such as gallium, silicon or arsenic. In order to be able to emit highly efficient light, they must be extremely pure and fulfill certain requirements. They are not sensitive to impact. And last 1,000 times longer than a traditional light bulb while generating very little heat and consuming little power. LEDs do not contain any hazardous gases nor do they generate UV radiation.

LUMEN

Lumen is the unit of measurement used to measure real reflected light quantities (luminous flux). Unlike other manufacturers, we measure the lumen that is radiated from our reflectors (with fresh batteries), thus without any losses incurred in the reflector/lamp head.

MODULAR SYSTEM

LED LENSER® lamps have a modular construction. This means that individual components may be replaced if required. The modular construction also makes cleaning the devices easier, particularly, after extreme use.

OPTISENSE® TECHNOLOGY

Sometimes it's dusky or shadowy, sometimes murky and sometimes pitch black. It is good to know that you can always trust in the innovative dimmer function of your LED LENSER® lamp. Because this function automatically regulates luminance depending on the reflecting light and thus prevents dazzling effects.

REFLECTOR LENSE

We have combined the benefits of lenses with the benefits of reflector technology. The result is both a homogeneous circular beam of light close up and an extremely strong light for long-distance use.

Footnotes.

SMART LIGHT TECHNOLOGY

To ensure that headlamps are ideally optimized to your individual needs, the Smart Light Technology creates very personalized lighting tools. This is made possible by the microcontrollers that save light programs with a variety of functional scopes in conjunction with button and switch combinations.

SPEED FOCUS®

Within milliseconds, the close circular light can be switched to strongly focused distance light. Thanks to the special sliding mechanism of the Speed Focus® this function can be operated with just one hand. It couldn't be easier to switch the light mode quickly, simply and reliably.

TURNING FOCUS

The LED LENSER® lamps have everything in view, thanks to the Turning Focus. The focus can be infinitely adjusted. Ideal, the handy rotating head makes it easy to convert close-up light into a sharply focused long-distance beam.

¹ Luminous flux (lumen/lm) or maximum beam distance (in meters) is measured using the setting specified in the table or text when switching on with a set of fresh alkaline batteries or, for rechargeable units, with a fully charged battery pack. If no brightness level is specifically named, the values refer to the Boost function, or if there is no Boost, to the respective brightest setting available. These are average values that may deviate by +/-15 % in individual instances in accordance with chip and battery/battery pack. A Boost function is available multiple times, but only for a very brief period of time in each case.

² The average lighting duration (h) of the relevant setting as given in the table or in the text is up to a luminous flux of 1 lumen. If no brightness level is specifically named, the values refer to the Low Power function, or if there is no such function, to the respective lowest setting available. A Boost function (if included) is available multiple times, but only for a very brief period of time.

³ Calculated value of the capacity in Watt hours (Wh). This applies to the battery(ies) contained in the relevant product in the delivered state or, for flashlights with battery pack(s), when the batteries are in a fully charged state.

NOTE

The data on scope of delivery, performances, dimensions, weights correspond to the existing knowledge at the time of printing. We reserve changes in scope of supply, appearance, design and color within the scope of further development without prior notice.

Product illustrations can deviate from the actual appearance of the products and may show optional accessories that can be purchased against extra charge.





Become a part of the LED LENSER® Community



ledlenser.com

LED LENSER® 

All specifications are made without guarantee. Changes, printing faults and errors excepted.
2015-DE-DIY-EV-1.0