



AIR TOOLS



TABLE OF CONTENTS

IMPACT WRENCHES	454-458
AIR RATCHETS	459
DIE GRINDERS	460



PISTOL GRIP IMPACT WRENCHES

Titanium housing helps to reduce weight, improve balance and ensure maximum durability.

Robust twin hammer mechanism for efficient energy transfer and long service life.

Feather throttle for maximum operator control.

Three position power regulator for forward rotation. Reverse rotation operates at maximum for highest breakaway torque.

Ambidextrous forward/reverse lever can be actuated with a single hand, even with gloves on.

Ergonomically designed handle-forward design improves balance and control, helping to reduce operator fatigue.

Protect your pistol grip impact wrenches with optional Protective Boots.

360° Rotating Air Inlet Fitting.



PROTECTIVE BOOT

- ▶ Fits your tool like a glove and protects it from the elements.
- ▶ Moisture resistant.

TITANIUM SERIES AIR IMPACT WRENCHES

Product #	Thru Hole Model	Protective Boot	Drive Size (in)	Breakaway Torque (ft-lbs)	Material	Overall Weight (lbs)	Overall Length (in)	Average Air Consumption (cfm)	Blow Rate (bpm)	Free Speed (rpm)
J138WP	J138WP-TH	J138PB	3/8	525	Titanium	2.9	6.0	4.4	1750	10500
J150WP-C	J150WP-CTH	J138PB	1/2 (Compact)	590	Titanium	3.0	6.1	4.4	1750	10500
J150WP	J150WP-TH	J150PB	1/2	1260	Titanium	4.6	7.1	5.1	1160	7225
J175WP	J175WP	J175PB	3/4	1560	Titanium	8.4	8.9	7.1	950	5300

J138PB will fit both the 3/8" and 1/2" Compact Impacts.



PISTOL GRIP MINI IMPACT WRENCHES



Rubber bumpers for durability.

Variable speed trigger for optimal speed regulation.

Comfortable rubber injected overlay grip is resistant to oils and acids.

Easy-to-use one-hand forward/reverse switch with integrated three position regulator.

MINI IMPACT WRENCHES

Product #	Drive Size (in)	Breakaway Torque (ft-lbs)	Overall Weight (lbs)	Overall Length (in)	Average Air Consumption (cfm)	Blow Rate (bpm)	Free Speed (rpm)
J138WP-M	3/8	445	2.9	4.4	3.0	1350	6000
J150WP-M	1/2	635	2.9	4.4	4.5	1500	10000

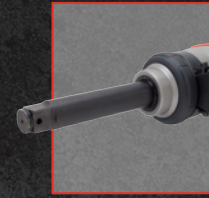


INLINE IMPACT WRENCHES

- › Excellent power to weight ratio.
- › Rubber bumper for durability.
- › Suspension hangers.



Flush



Extended



#5 Spline

Three different anvil options available.



Adjustable side handle included.

Two-stage trigger for more control.

Convenient forward/reverse location.

Comfort grip for low vibration.

Oversized D-Handle allows for use with gloves.



Includes optional outside trigger.

LARGE DRIVE INLINE IMPACT WRENCHES

Product #	Drive Size	Anvil	Breakaway Torque (ft-lbs)	Overall Weight (lbs)	Overall Length (in)	Average Air Consumption (cfm)	Blow Rate (bpm)	Free Speed (rpm)
J199WD	1"	Flush Thru Hole Anvil	2500	16.0	15.0	12	1000	5000
J199WD-6	1"	6" Extended Thru Hole Anvil	2500	17.9	20.3	12	1000	5000
J199WD-S	#5 Spl.	6" Extended Thru Hole	2500	19.6	20.3	12	1000	5000

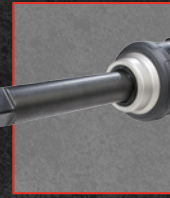


PISTOL IMPACT WRENCHES

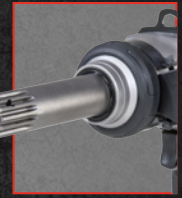
- ▶ Excellent power to weight ratio.
- ▶ Rubber bumper for durability.
- ▶ Compact size for tight spaces.



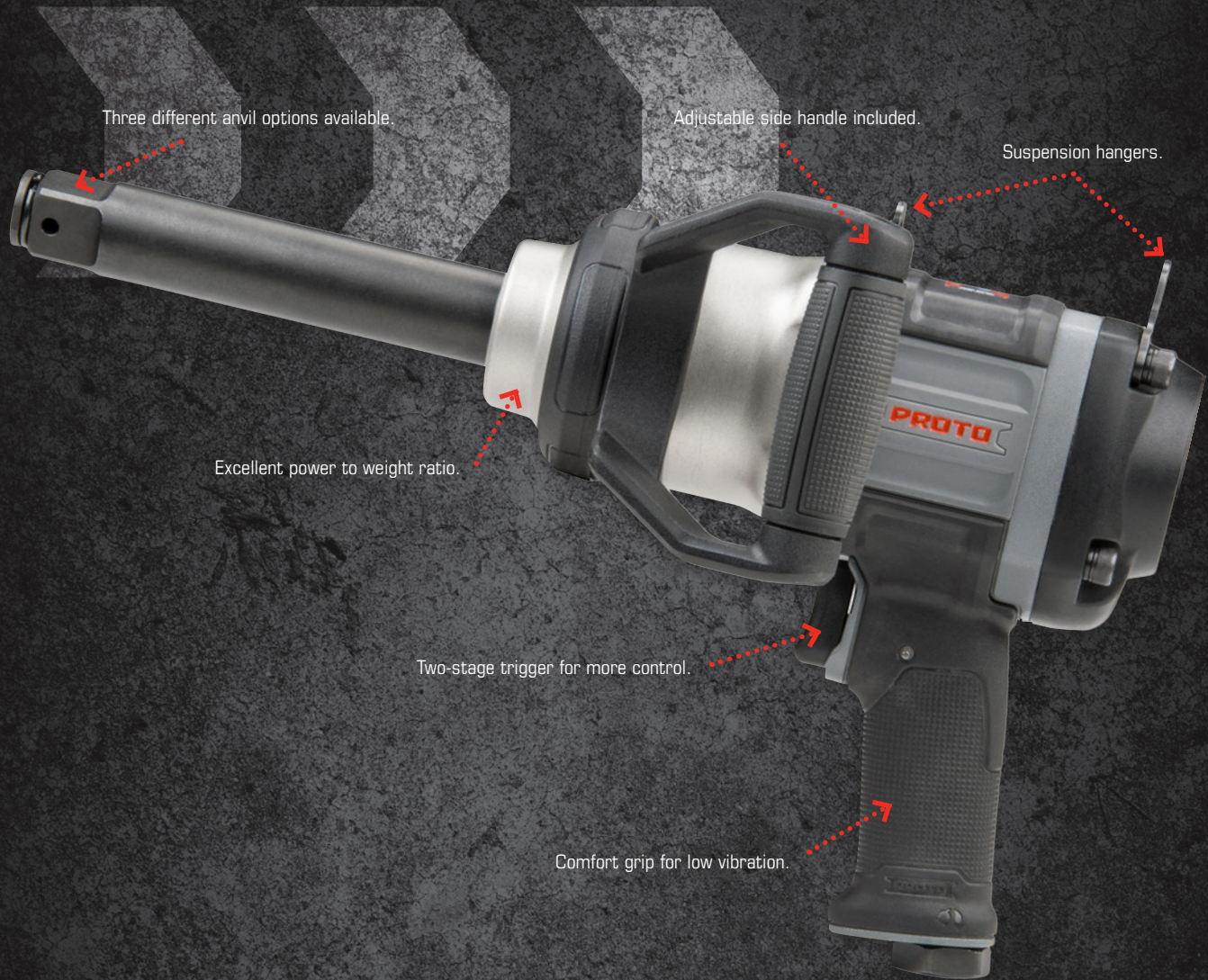
Flush



Extended



#5 Spline



LARGE DRIVE IMPACT PISTOL WRENCHES

Product #	Drive Size	Anvil	Breakaway Torque (ft-lbs)	Overall Weight (lbs)	Overall Length (in)	Average Air Consumption (cfm)	Blow Rate (bpm)	Free Speed (rpm)
J199WP	1"	Flush Thru Hole Anvil	2500	15.2	11	12	1000	5000
J199WP-6	1"	6" Extended Thru Hole Anvil	2500	17.3	16.3	12	1000	5000
J199WP-S	#5 Spl.	6" Extended Thru Hole	2500	18.9	16.3	12	1000	5000

ANGLE IMPACT WRENCHES



Low profile head improves access to tight areas while housing design contains gearing to reduce maintenance issues.

Impact mechanism delivers high torque with low reaction force, reducing effort and improving comfort and control.

Feather start trigger and forward/reverse ring for ease of use and increased productivity.

Proto air tools feature exhaust deflectors for reduced noise.

TITANIUM SERIES ANGLE IMPACT WRENCHES

Product #	Drive Size (in)	Breakaway Torque (ft-lbs)	Overall Weight (lbs)	Overall Length (in)	Average Air Consumption (cfm)	Blow Rate Forward (bpm)	Blow Rate Reverse (bpm)	Free Speed (rpm)
J138WA	3/8	170	4	13-15/16	5.0	1600	1700	7200
J150WA	1/2	200	4	13-15/16	5.0	1600	1700	7200



SEALED HEAD AIR RATCHETS



Quick Release for easy socket changes.

Low Profile Head improves access to tight areas.



Lightweight Titanium Sealed Head for improved durability, lower maintenance and superior balance.

Forward/Reverse Control Ring positioned away from ratcheting head for greater usability.

360-degree Directional Exhaust.

Non-Slip Textured Rubber Grip.

Feather Start Trigger for added safety and control.

TITANIUM SERIES SEALED HEAD AIR RATCHETS

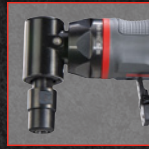
Product #	Drive Size (in)	Max. Torque (ft-lbs)	Overall Weight (lbs)	Overall Length (in)	Average Air Consumption (cfm)	Free Speed (rpm)	Vibration Level (m/s ²)	Noise Level (dB(A))
J138RSH	3/8	65	2.9	12.4	3.7	350	5.57	89.3
J150RSH	1/2	65	2.9	12.4	3.7	350	5.57	89.3

DIE GRINDERS

- › Tool free power adjustment.
- › Precision collet for accurate material removal.
- › New design throttle with lockout allows for better control.



Straight



90°



120°



Extended

Four different heads available.



Comfort rubber grip keeps users hand isolated as unit gets cold from use.

360° Rotating exhaust allows user to direct exhaust away from body.

MINI DIE GRINDER

Product #	Type	Motor Power (hP)	Speed (rpm)	Overall Length (in) (L)	Weight (lbs)
J325AGS	1/4" Straight	0.3	30,000	6.3	1
J325AGAH90	1/4" 90°	0.3	23,000	6.5	1.2
J325AGAH120	1/4" 120°	0.3	24,000	7.5	1.2
J325AGSE	1/4" Extended	0.3	28,000	10.3	1.5

Three different heads available.



Comfort rubber grip keeps user's hand isolated as unit gets cold from use.

360° Rotating exhaust allows user to direct exhaust away from body.

MEDIUM DIE GRINDER

Product #	Type	Motor Power (hP)	Speed (rpm)	Overall Length (in) (L)	Weight (lbs)
J525AGS	1/4" Straight	0.5	25,000	7	1.5
J525AGAH90	1/4" 90°	0.5	18,500	6.9	1.7
J525AGSE	1/4" Extended	0.5	23,000	10.5	2.2